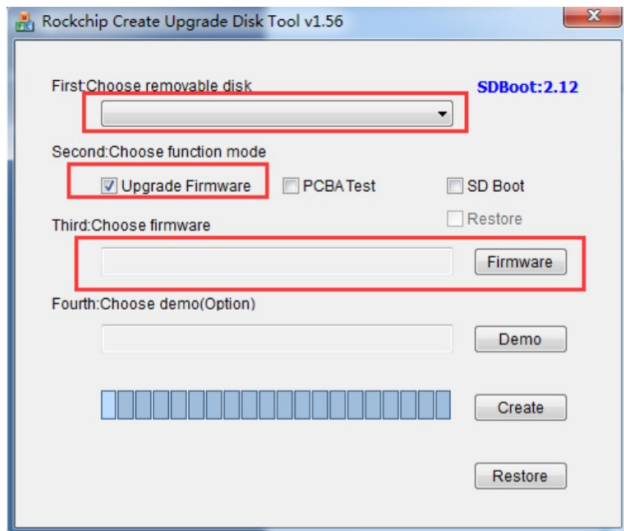


Flash an OS on R Series Screens

Proceed to Step 8 if you have received a pre-made micro-SD card.

1. Connect a micro-SD card to your PC.
2. Run SDDiskTool as an administrator. Windows and antivirus software may flag this program, please add it to your trusted software list if this occurs
3. Select your micro-SD card from the removable storage list in SDDiskTool
4. Ensure 'Upgrade Firmware' is selected
5. Under "Choose Firmware" select the desired img file. If it is not immediately visible, navigate to the folder manually from the C: drive.



6. Click 'Create' and confirm. Allow the operation to complete. Repeat these instructions after confirming this program can be trusted if antivirus software interrupts the action.
7. Eject the micro-SD card.
8. Insert the micro-SD card into the R Series screen while it is disconnected from power.
9. Connect the screen to power. Allow 5-10 minutes for the operating system to install.
10. A dialogue at the bottom of the screen will indicate when the installation is complete. Remove the micro-SD card when prompted.
11. Allow the screen to automatically reboot. Android 10 will display once initialization is complete.